

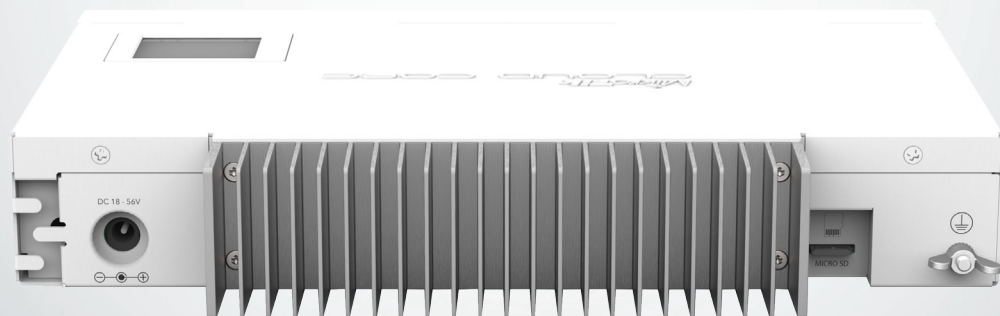
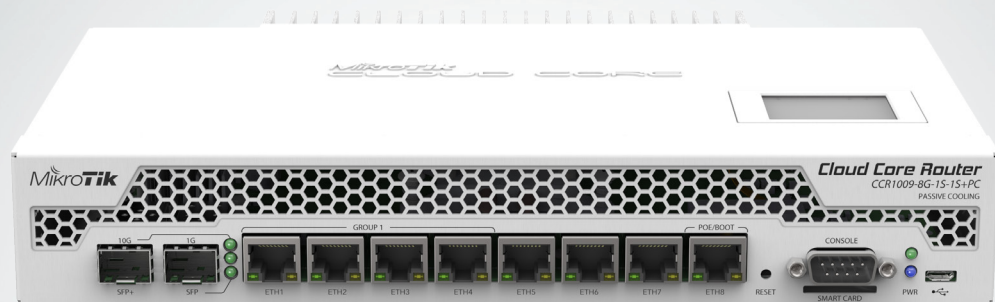
Cloud Core Router

CCR1009-8G-1S-1S+PC

Our popular 9-core Cloud Core Router is now available in a new passive cooling enclosure. This CCR1009 unit is equipped with two heat-pipes and a specially designed heat-sink, so its completely silent.

The unit is powered by an external 24v 2.5A AC/DC adapter and supports power redundancy if you also power it from the PoE input port.

The device comes with a desktop enclosure, but special rackmount brackets are also included, so it can be used either on desk or in rack.



CPU	TILE-Gx8009 (9-cores, 1Ghz per core)
Memory	Built in 2GB RAM
Ethernet	8x 10/100/1000 Mbit/s Gigabit Ethernet with Auto-MDI/X
SFP	1x SFP cage, 1x SFP+ cage, DDMI support
Expansion	microUSB port, SmartCard slot, MicroSD slot
Storage	128MB Onboard NAND
Serial port	One DB9 RS232C asynchronous serial port
Extras	Reset switch; beeper; voltage, current and temperature monitoring, LCD
Power options	External 18-58V PSU included, Passive PoE input 18-58V
Board dimensions	444x175x47mm
OS	MikroTik RouterOS v6, Level 6 license



IEC Cord



USB cable



Rackmount ears



Power adapter