

# cnWave™ 60 GHz V2000

## Client Node

### QUICK LOOK:

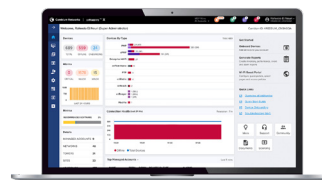
- Supports 57 to 66 GHz
- Up to 3.6 Gbps (1.8 Gbps DL and 1.8 Gbps UL). Future channel bonding feature will increase capacity to up to 5.2 Gbps
- Auto-beamforming, +/- 10° horizontal, +/- 4.0° vertical
- 2.5 GbE PoE input AND 2.5 GbE 802.3at PoE output port for powering external devices
- 802.11ay standard technology with Terragraph certification



### Designed for high-speed and high-density deployments

Cambium Networks' cnWave 60 GHz solution provides easy, fast and cost-effective wireless gigabit connectivity for edge access and/or high-capacity backhaul for edge access solutions at a significantly lower TCO than fiber infrastructure. Service providers and enterprises now have access to gigabit for business and residential connectivity, backhaul for Wi-Fi access or LTE/5G small cell. cnWave solutions are highly efficient at handling high-density deployments in cities and suburban areas.

The V2000 features a 2.5 GbE PoE input port as well as a 2.5 GbE PoE 802.3at output port for powering Wi-Fi access points or video surveillance cameras. This makes the V2000 especially well-suited to backhaul Cambium's XV2 series of outdoor Wi-Fi AP's.



### Cloud and on-premises management

cnWave 60 GHz operates with Cambium Networks' cnMaestro management system. cnMaestro™ is a cloud-based or on-premises software platform for secure, end-to-end network control. cnMaestro wireless network manager simplifies device management by offering full network visibility and zero-touch provisioning. View and perform a full suite of wireless network management functions in real time. Optimize system availability, maximize throughput and meet emerging needs of business and residential customers.

## cnWave™ 60 GHz V2000 Client Node

### Specifications

<b>Spectrum</b>		<b>Antenna</b>	
<b>Frequency Range</b>	57 to 66 GHz in a single SKU	<b>Gain</b>	34.5 dBi
<b>Channel Width</b>	2.16 GHz, 4.32 GHz*	<b>Type</b>	Integrated
<b>Channel Bonding*</b>	Up to 2 adjacent channels	<b>Beamforming Scan Range</b>	+/- 10° azimuth, +/- 4.0° elevation
<b>Mode of Operation</b>	PMP Client or PTP	<b>Powering</b>	
<b>Interface</b>		<b>Type</b>	802.3at
<b>Channel Access</b>	TDMA/TDD	<b>Power Consumption</b>	18W (48W when using PoE output port)
<b>Ethernet Interface</b>	1 x 2.5 GbE PoE Input 1 x 2.5 GbE PoE 802.3at Output	<b>Physical</b>	
<b>Networking</b>		<b>Environmental</b>	IP66/67
<b>Protocols Supported</b>	IPv4, IPv6, Layer2 Bridge, Layer3 IPv6 Routing, Open/R mesh	<b>Temperature</b>	-40°C to 60°C (-40°F to 140°F)
<b>Network Management</b>	cnMaestro, HTTP, HTTPS, SNMP v2c & v3	<b>Mean Time Between Failure</b>	> 40 years
<b>MTU</b>	2,000 bytes	<b>Weight</b>	1.9 kg (4.2 lbs.) with bracket
<b>VLAN</b>	802.1ad (QinQ), 802.1Q with 802.1p priority	<b>Dimensions</b> H x W x D	249 x 166 x 220 mm (9.8 x 6.5 x 8.7 in)
<b>Security</b>		<b>Wind Survival</b>	200 km/h (124 mph)
<b>Encryption</b>	128-bit AES	<b>Performance</b>	
<b>Firmware Security</b>	Signed Firmware Images	<b>Modulation &amp; Coding Schemes</b>	MCS-0 (BPSK) to MCS-12 (16-QAM-3/4)
<b>Performance</b>		<b>Latency</b>	< 1 ms
<b>Maximum EIRP</b>	49 dBm		

### cnWave™ 60 GHz V2000 Client Node



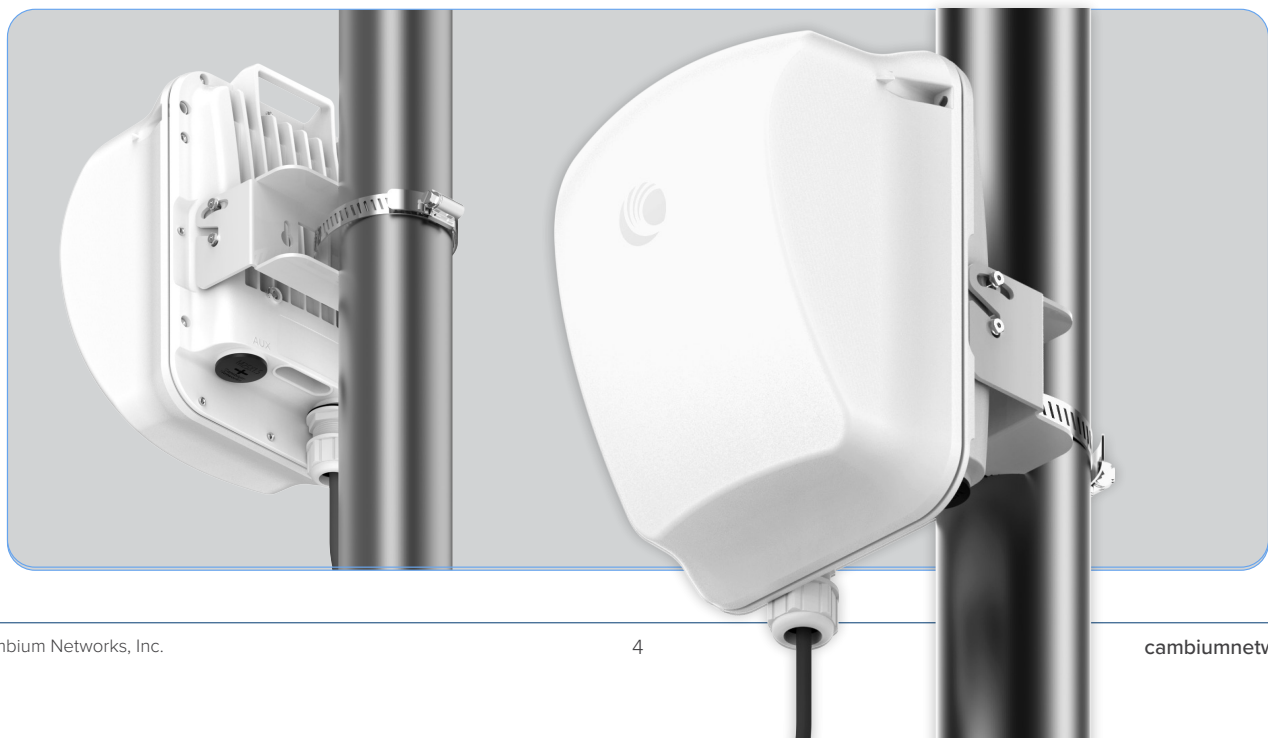
## cnWave™ 60 GHz V2000 Client Node

### cnWave 60 GHz V2000 Ordering Information

<b>C600500C020A</b>	60GHz cnWave V2000 Client Node 30W with US cord
<b>C600500C026A</b>	60GHz cnWave V2000 Client Node 30W with Israel Cord
<b>C600500C027A</b>	60GHz cnWave V2000 Client Node 30W with South Africa Cord
<b>C600500C028A</b>	60GHz cnWave V2000 Client Node 30W with India Cord
<b>C600500C029A</b>	60GHz cnWave V2000 Client Node 30W with no Cord
<b>C600500C030A</b>	60GHz cnWave V2000 Client Node, no power supply and no power cord
<b>C600500C031A</b>	60GHz cnWave V2000 Client Node 30W with EU cord
<b>C600500C032A</b>	60GHz cnWave V2000 Client Node 30W with UK Cord
<b>C600500C033A</b>	60GHz cnWave V2000 Client Node 30W with ANZ Cord
<b>C600500C034A</b>	60GHz cnWave V2000 Client Node 30W with Brazil Cord
<b>C600500C035A</b>	60GHz cnWave V2000 Client Node 30W with Argentina Cord

### cnMaestro Management Ordering Information

<b>MSX-SUB-T4-1</b>	cnMaestro X for cnWave: Advanced management and includes CC Pro for Tier4; 5-year subscription / Tier4 device; Tier4 device include Client Node
<b>MSX-SUB-T4-3</b>	cnMaestro X for cnWave: Advanced management and includes CC Pro for Tier4; 5-year subscription / Tier4 device; Tier4 device include Client Node
<b>MSX-SUB-T4-5</b>	cnMaestro X for cnWave: Advanced management and includes CC Pro for Tier4; 5-year subscription / Tier4 device; Tier4 device include Client Node



## cnWave™ 60 GHz V2000 Client Node

### Extended Warranty, Cambium Care and cnMaestro Management Ordering Information

<b>EW-E1CNWV2000-WW</b>	60 GHz V2000 Extended Warranty, 1 Additional Year
<b>EW-E2CNWV2000-WW</b>	60 GHz V2000 Extended Warranty, 2 Additional Years
<b>AR-E0CNWV2000-WW</b>	60 GHz V2000 Upgrade to All Risks Advanced Replacement Program during 3-year standard warranty
<b>AR-E1CNWV2000-WW</b>	60 GHz V2000 All Risks Advance Replacement, 1 Additional Year
<b>AR-E2CNWV2000-WW</b>	60 GHz V2000 All Risks Advance Replacement, 2 Additional Years
<b>CCADV-SUP-V2000-1</b>	Cambium Care Advanced, 1-year support for one V2000. 24x7 TAC support, SW updates, and NBDS advance replacement for HW
<b>CCADV-SUP-V2000-3</b>	Cambium Care Advanced, 3-year support for one V2000. 24x7 TAC support, SW updates, and NBDS advance replacement for HW
<b>CCADV-SUP-V2000-5</b>	Cambium Care Advanced, 5-year support for one V2000 . 24x7 TAC support, SW updates, and NBDS advance replacement for HW
<b>CCADV-UPG-V2000-1</b>	Cambium Care Advanced Add-on to cnMaestro X, 1-year support for one V2000. 24x7 TAC support, SW updates, and NBDS advance replacement for HW
<b>CCADV-UPG-V2000-3</b>	Cambium Care Advanced Add-on to cnMaestro X, 3-year support for one V2000. 24x7 TAC support, SW updates, and NBDS advance replacement for HW
<b>CCADV-UPG-V2000-5</b>	Cambium Care Advanced Add-on to cnMaestro X, 5-year support for one V2000. 24x7 TAC support, SW updates, and NBDS advance replacement for HW
<b>CCPRO-SUP-V2000-1</b>	Cambium Care Pro, 1-year support for one V2000. 24x7 TAC support, SW updates
<b>CCPRO-SUP-V2000-3</b>	Cambium Care Pro, 3-year support for one V2000. 24x7 TAC support, SW updates
<b>CCPRO-SUP-V2000-5</b>	Cambium Care Pro, 5-year support for one V2000. 24x7 TAC support, SW updates
<b>CCPRM-SUP-V2000-1</b>	Cambium Care Prime, 1-year support for one V2000. 24x7 TAC SLA support, SW updates, and ARAR for HW
<b>CCPRM-SUP-V2000-3</b>	Cambium Care Prime, 3-year support for one V2000. 24x7 TAC SLA support, SW updates, and ARAR for HW
<b>CCPRM-SUP-V2000-5</b>	Cambium Care Prime, 5-year support for one V2000. 24x7 TAC SLA support, SW updates, and ARAR for HW

#### ABOUT CAMBIUM NETWORKS

Cambium Networks empowers millions of people with wireless connectivity worldwide. Its wireless portfolio is used by commercial and government network operators as well as broadband service providers to connect people, places and things. With a single network architecture spanning fixed wireless and Wi-Fi, Cambium Networks enables operators to achieve maximum performance with minimal spectrum. End-to-end cloud management transforms networks into dynamic environments that evolve to meet changing needs with minimal physical human intervention. Cambium Networks empowers a growing ecosystem of partners who design and deliver gigabit wireless solutions that just work.