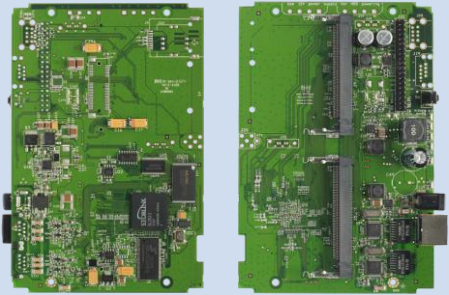


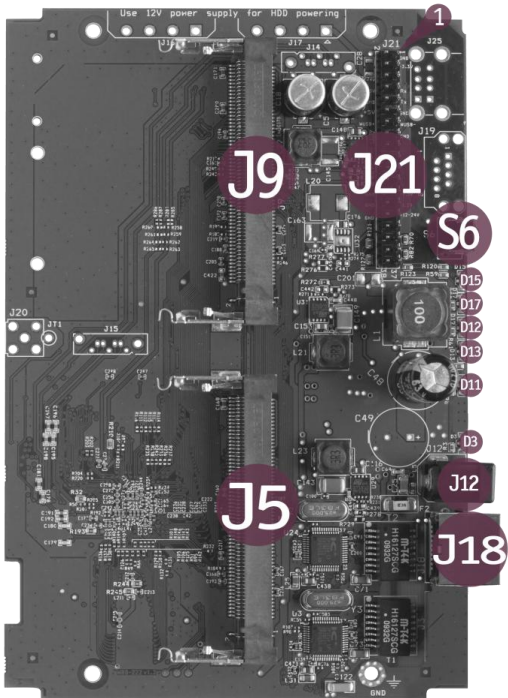
# Wiligear CPU board

## WBD-222



### System

Processor	32-bit 400MIPS ARM9 RISC architecture 300 MHz processor
Memory	32 MB SDRAM, 8 MB Flash
Mini-PCI	2 x Type III Mini PCI sockets
Networking interface	1 x 10/100 Base-TX Ethernet Port
RoHS compliance	Available



Item	Description
J5	Type III Mini-PCI socket
J9	Type III Mini-PCI socket
J21	Jumpers with GPIO, Hi-Speed USB, power (number 1 signifies the first pin)
J12	Power connector
J18	Ethernet connector
D3	3.3V power LED*
D11	LAN activity LED
D12	GPIO controlled LED (GPIO0_3)*
D13	GPIO controlled LED (GPIO0_2)*
D15	GPIO controlled LED (GPIO0_1)*
D17	GPIO controlled LED (GPIO0_5)*
S6	Reboot button

### Software

Operating modes	Router, bridge
Wireless operating modes	AP, Station, AP WDS, Station WDS, Virtual radios (VSSID)
Wireless security	WEP, WPA/WPA2 Personal, WACL
Wireless QoS	WMM
WAN protocols	Static IP, DHCP client, PPPoE client
Network	NAT, static and dynamic routing (RIP, OSPF, BGP), firewall, port forwarding, VLAN, STP
Services	DHCP server, SNMP server, NTP client, Remote syslog, Wireless statistics
Management	HTTP(s) GUI, SSH CLI, SNMP read
Tools	Site survey, traffic generator, antenna alignment

### Mechanical

Dimensions (Height x Width)	105 x 154 mm (4.13 x 6.06 inch.)
Weight	108 g (0.24 lb)
Operating temperature	-25 to +65 °C (-13 to 149 F)
Humidity	20% to 95% (non condensing)

### Electrical

Input voltage	12-48 V
Operating current	0.17A Typical @ 12V